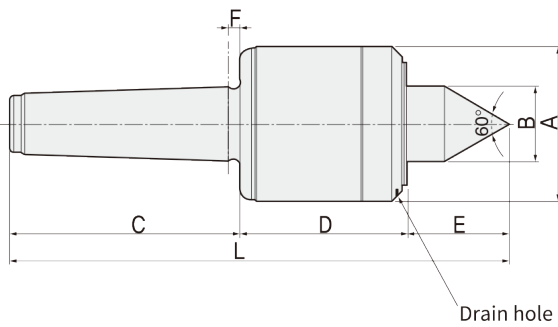


# BHS

## FEATURES

- Accuracy guaranteed to 0.002mm TIR (0.0001")
- Excellent for CNC, grinder and high precision high speed machining.
- High RPM (Up to 12,000)
- Heat-treated point to HRc 60 ± 2.
- Drain hole have to be located on bottom side.
- Labyrinth seal for coolant deflectors and super high speed.
- Heat-treated body for extra strength, rigidity and long life.
- Carbide point available.
- Carbide point to HRa 90 ± 5.



Drain hole

Available Carbide Tipped Points  
**BHSC-TYPE**

- MT2: 042002
- MT3: 042003
- MT4: 042004
- MT5: 042005

## Dimension

Unit: mm. kg

MODEL	MT	A	B	C	D	E	F	G	L	Workpiece Weight	Max, R.P.M	Weight	Max, Run Out
041002 (042002)	2	50	20	68	54	26	4	10	148	360	15,000	1.5	0.002
041003 (042003)	3	50	20	85	54	26	4.5	10	165	360	15,000	1.8	0.002
041004 (042004)	4	70	30	108	75	37	5.3	14	220	560	12,000	2.2	0.002
041005 (042005)	5	70	30	136	75	37	6.3	18	248	560	12,000	5.2	0.002

\* (MODEL NO) : Carbide Tip Type

## BHS type Technical data

- 2,3BHS
- 4,5BHS

